

June 19, 2018

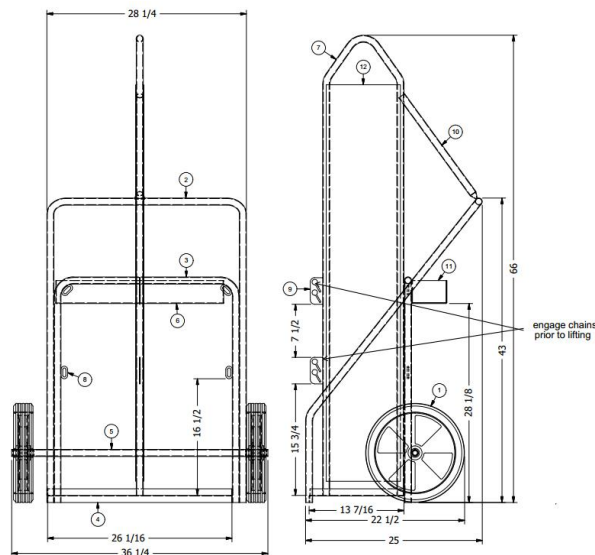
Re custom bottle cart with top lift - capacity certification – job CC5-FW-LL-14C

To whom it may concern:

This letter confirms the custom bottle cart with top lift, marketed by Canway Equipment and Manufacturing (Canway) has a capacity of 136 kg (300 lbs). The design and construction of the bottle cart is covered by sealed drawing CC5-FW-LL-14C. The bottle cart has several conditions on its use, they are as follows:

1. Capacity of cart is 136 kg (300 lbs).
2. Design of structure to conform to CSA S136 with a live load factor of 1.5
3. Tubing material to have minimum yield strength of 50 ksi.
4. All welding to be done in accordance with AWS D1.3.
5. It is recommended that the cart have marking that identify the date of manufacture, manufactures name and rated capacity.
6. The loop on the top is designed to move only one cart with the choker being engaged around it.
7. All “above the hook” equipment is by others (spreader bars, chains, cables, etc.)
8. The bottles stored on the cart must be securely chained in place prior to lifting.

The primary dimensions of the cart are shown below:



Should you have any question or concerns please contact us and we will be happy to assist you.

Sincerely,

Anthony Mulholland P.Eng.

